

CEMBRIT

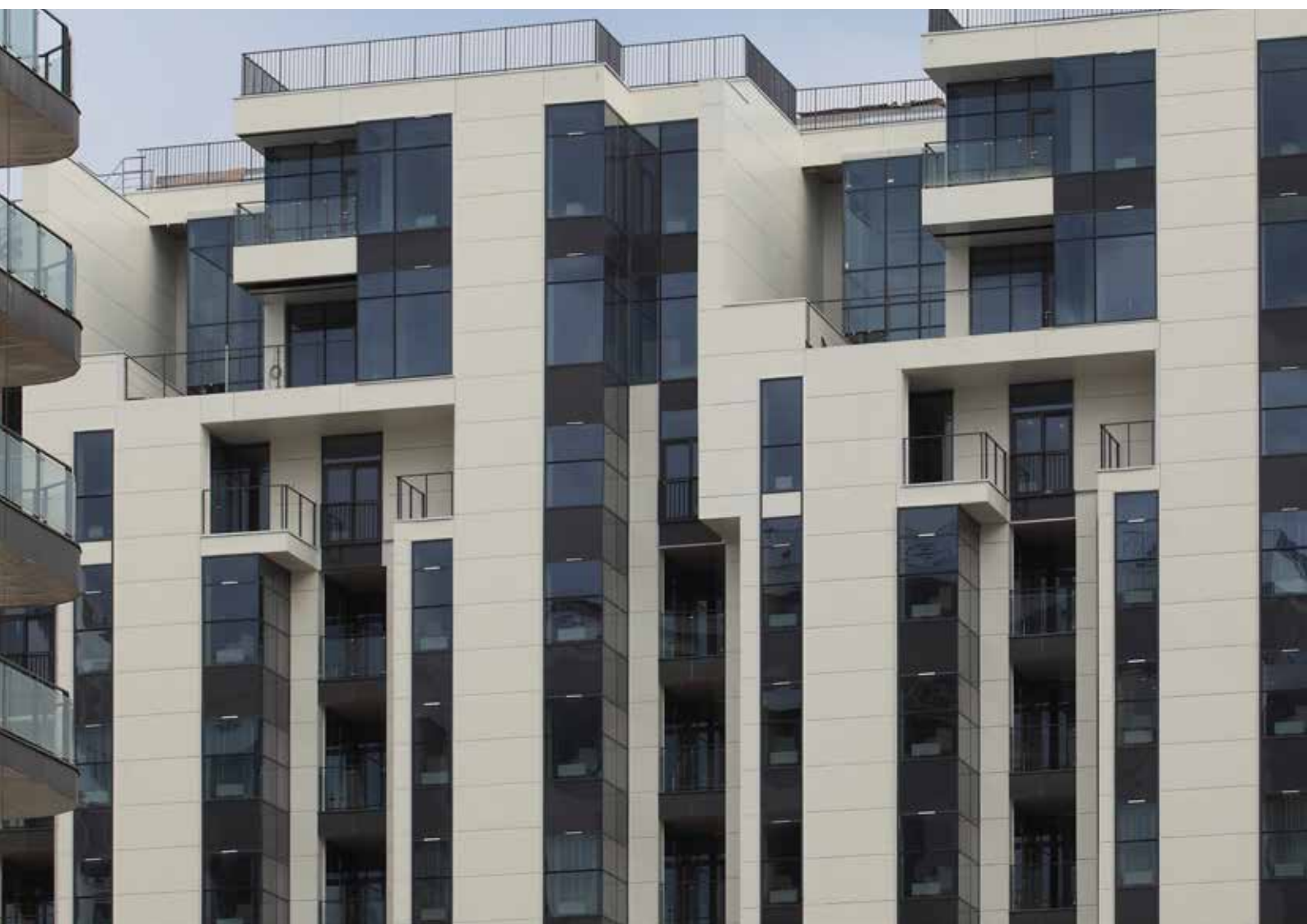
Cembrit Facade on Wood

Cembrit Deco

Installation

Table of Contents

Cembrit	2	Accessories	22
The Self-ventilating Facade	4	Onsite Handling	27
Product Range	6	Storing and Handling	28
Installation	8	Care and Maintenance	29
Profiles	18	Health and Safety	31



Cembrit

Cembrit

Cembrit is one of the leading European manufacturers of multi-capability fibre cement building products. Our products and solutions add exciting new design opportunities for moulding attractive, durable settings for people's lives. But Cembrit is more than mere products. We also help make all kinds of design and construction projects easier as well as more profitable, inspiring and effective.

And for us, all construction also involves building relations with people, making your day better, and helping you make the day better for others.

Product Information

Cembrit fibre cement is a modern building material made from natural and environmentally friendly raw materials. The technology has been developed by Cembrit, having more than 90 years of experience within the manufacture of fibre cement. Our wide experience ensures a sustainable product which has accumulated all the advantages of fibre cement. The facade range can be used in all self-ventilated light weight facade constructions. Featuring properties such as non-combustibility, sound and weather insulation as well as high impact strength, Cembrit fibre cement boards are the ideal facade material.

Quality

Cembrit product specifications and classifications comply with EN 12467:2012 + A2:2018 og EN 13501-1:2019

The facade range

- Is manufactured in accordance with the quality management system ISO 9001:2015
- Complies with the provisions set out in the Construction Products Regulation (EU) No. 305/2011

Cembrit Deco

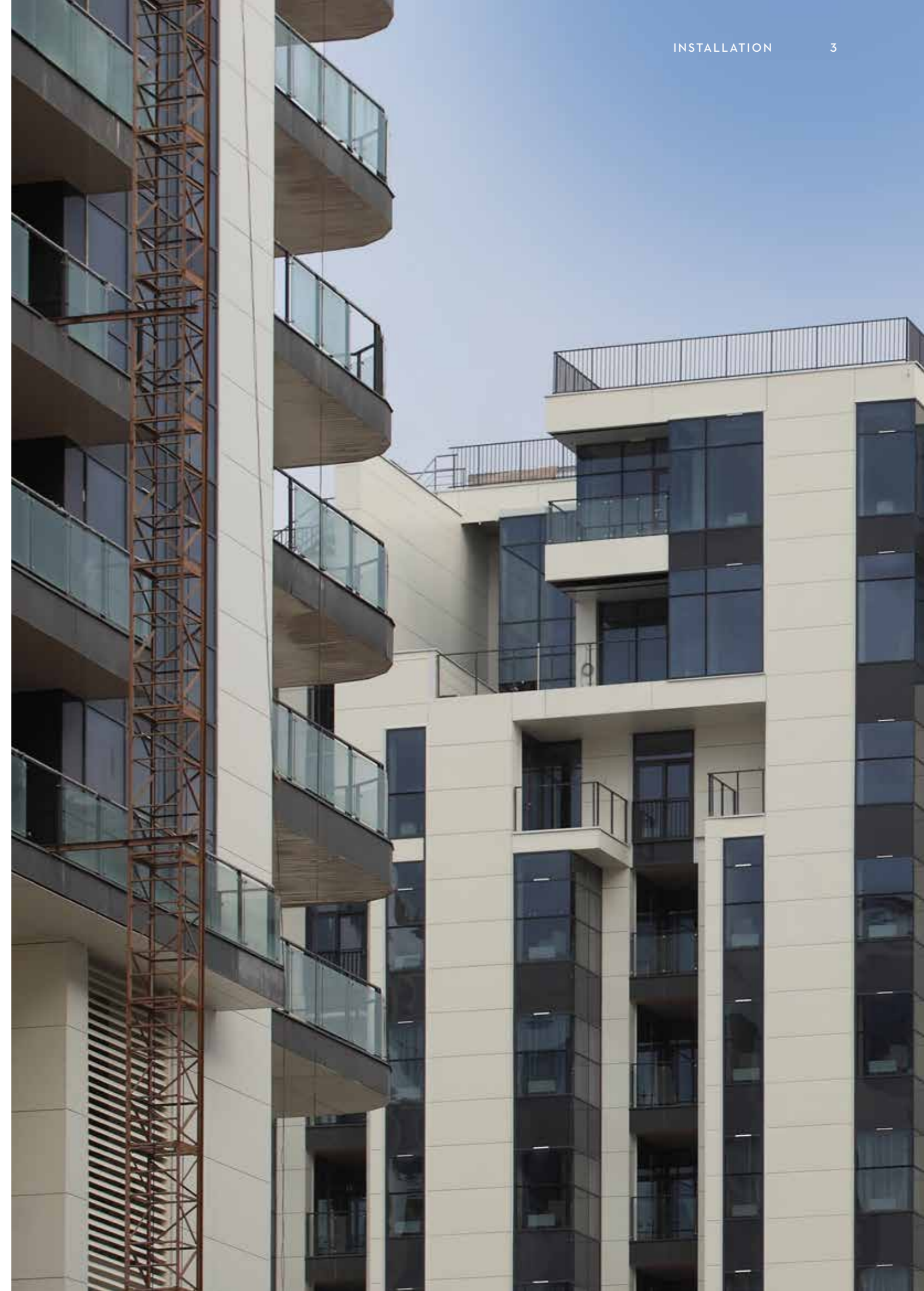
Cembrit Deco is an autoclaved fibre cement board that is subsequently sanded. After this process, pigmented water-based coating is applied as well as a clear water-based back coating. The edges of the boards are painted during the same process. To provide adequate protection of the edges when the board is cut on site, a Cembrit Edge Paint kit is provided.

Warranty

Cembrit offers a 10 year warranty. More detailed warranty conditions are available on request from your local Cembrit offices.

Disclaimer

The information contained in this publication and otherwise supplied to users of Cembrit products is based on Cembrit's general experience, best knowledge and belief. However, due to factors which fall beyond Cembrit's knowledge and control, which can affect the use of the products, no warranty is given, express or implied with respect to fitness for particular purpose or otherwise. Cembrit's policy is one of continuous improvement. Cembrit therefore reserves the right to alter specifications at any time and without notice. Colours and textures may vary according to light and weather conditions. Owing to this and limitations of the printing process, colours in this brochure may vary. Please, ensure that you have the latest version of this publication by checking that the publication date corresponds with the downloadable version from our website. In case of doubt, please contact your local Cembrit representative.



The self-ventilating facade

A self-ventilating facade is a construction which helps minimise temperature variations in the wall throughout the year. Sunlight and heat are reflected away in the summertime, and insulation behind the facade boards reduces heat loss in lower temperatures.

At the same time, the natural ventilation passing through the construction minimises condensation.

The self-ventilating facade has additional features and benefits.

The most important benefit is the protection of the underlying construction against weather, wind and moisture. Some moisture passes through the facade, but it is limited to a level that can either be drained away or eliminated by natural ventilation.

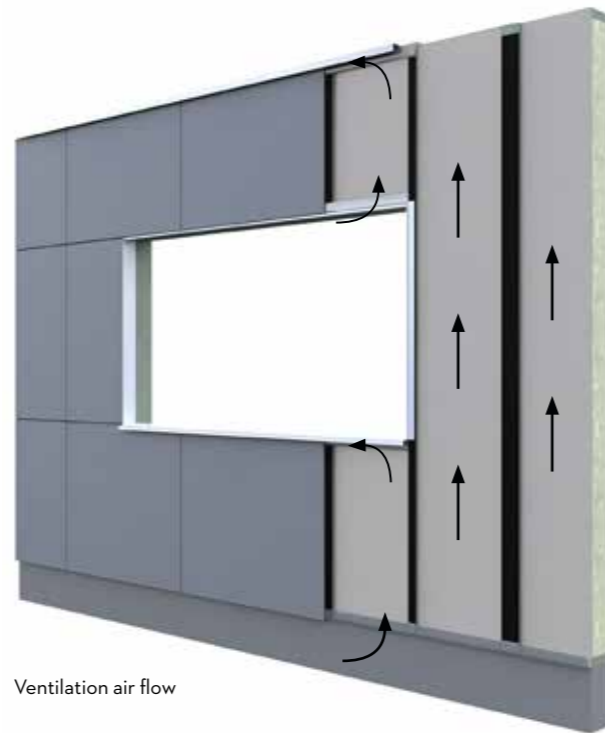
The drainage feature of the system works when rainwater or moisture penetrates through the gaps in the facade. The moisture runs down either the reverse of the facade boards, the windstopper, or the insulation. There should be ventilation openings at the base of the structure and above doors and windows. These openings will also help drain the water away from the construction.

The natural ventilation works by means of a chimney effect. The air enters at the bottom of the structure and on its way up through the facade takes moisture-laden air through the ventilation openings at the top of the structure or at window or door openings.

The boards can be installed with open horizontal joints or with joint profiles. Horizontal joints contribute minimally to the natural ventilation and therefore, profiles can be used in these joints, if required.

Steel or timber framed construction

1. Cembrit Deco
2. EPDM
3. Ventilated area minimum 20mm
4. Timber batten minimum 20mm wide
5. Windstopper
6. Steel, timber framed construction with insulation or backwall



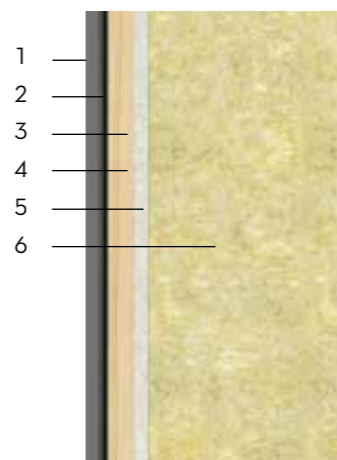
Ventilation air flow



Open joints

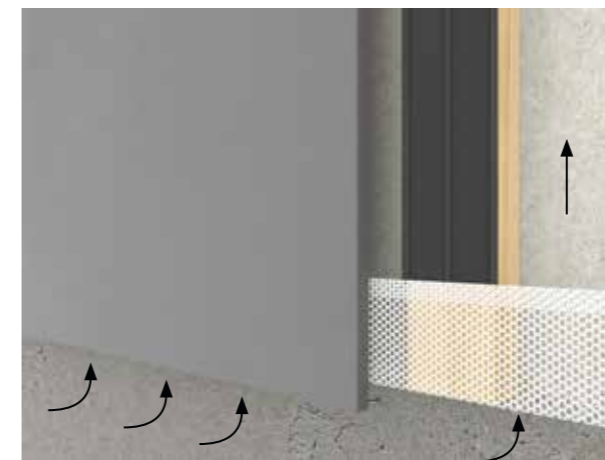


Joint profile



The self-ventilating facade

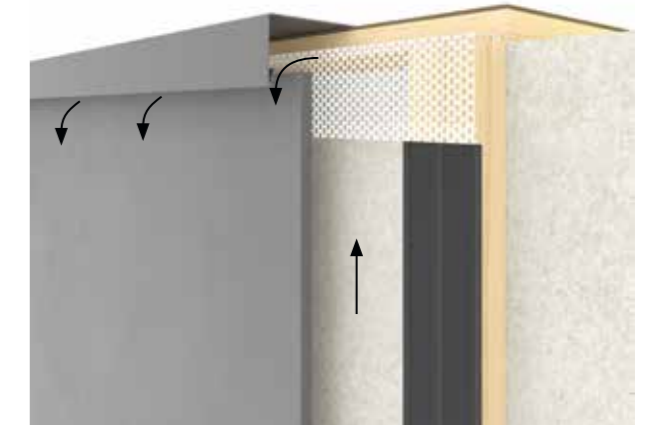
Ventilated Openings



Air is pulled into the construction through an opening at the base of the facade, and it must be ensured that unobstructed ventilation is possible throughout the facade's height. There should be a minimum free opening area of 10mm, or equivalent 100cm² per meter. If steel, aluminium or plastic perforated profiles are used, a ventilation area opening of minimum 100cm² per meter is required. The opening at the base is also used to drain moisture that has entered the facade.



A horizontal ventilation opening of minimum 10mm or equivalent to 100cm² per meter should be maintained beneath windows or other openings where a sill is used. This ventilation gap is usually formed between the top edge of the facade boards and the bottom edge of the sill. It is recommended that the sill projects a minimum of 30mm beyond the front of the facade. This ensures that the water running from the sill does not enter the structure.



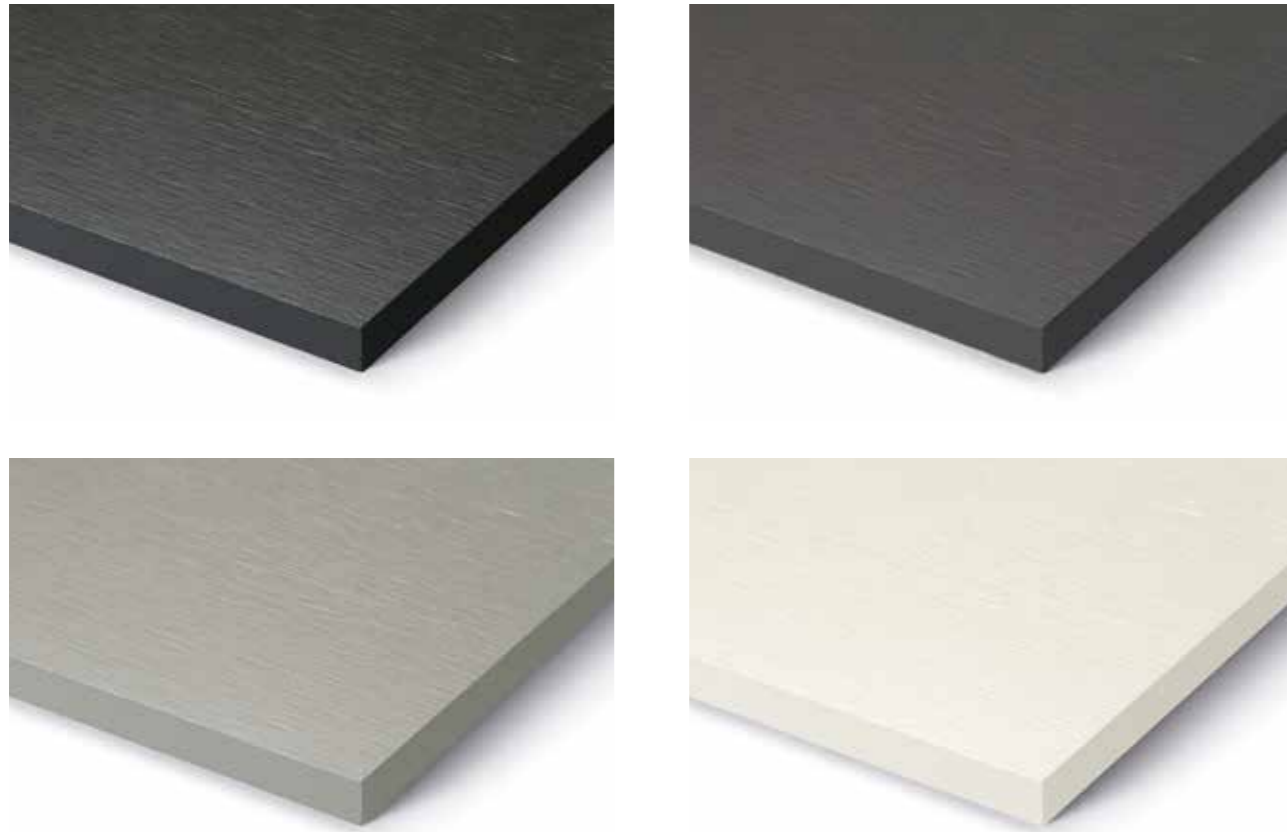
The passage of air must be maintained at the top of the facade whether it abuts a roof or other structure. Just as at the base, there must be a ventilation gap of a minimum of 10mm or 100cm² per meter.



A horizontal free ventilation opening must be maintained above windows and doors as well. This ventilation gap must be at least 10mm wide. If steel, aluminium or plastic perforated profiles are used, a ventilation area opening of minimum 100cm² per meter is required. The opening at the base is also used to drain moisture that has entered the facade.

Product Range

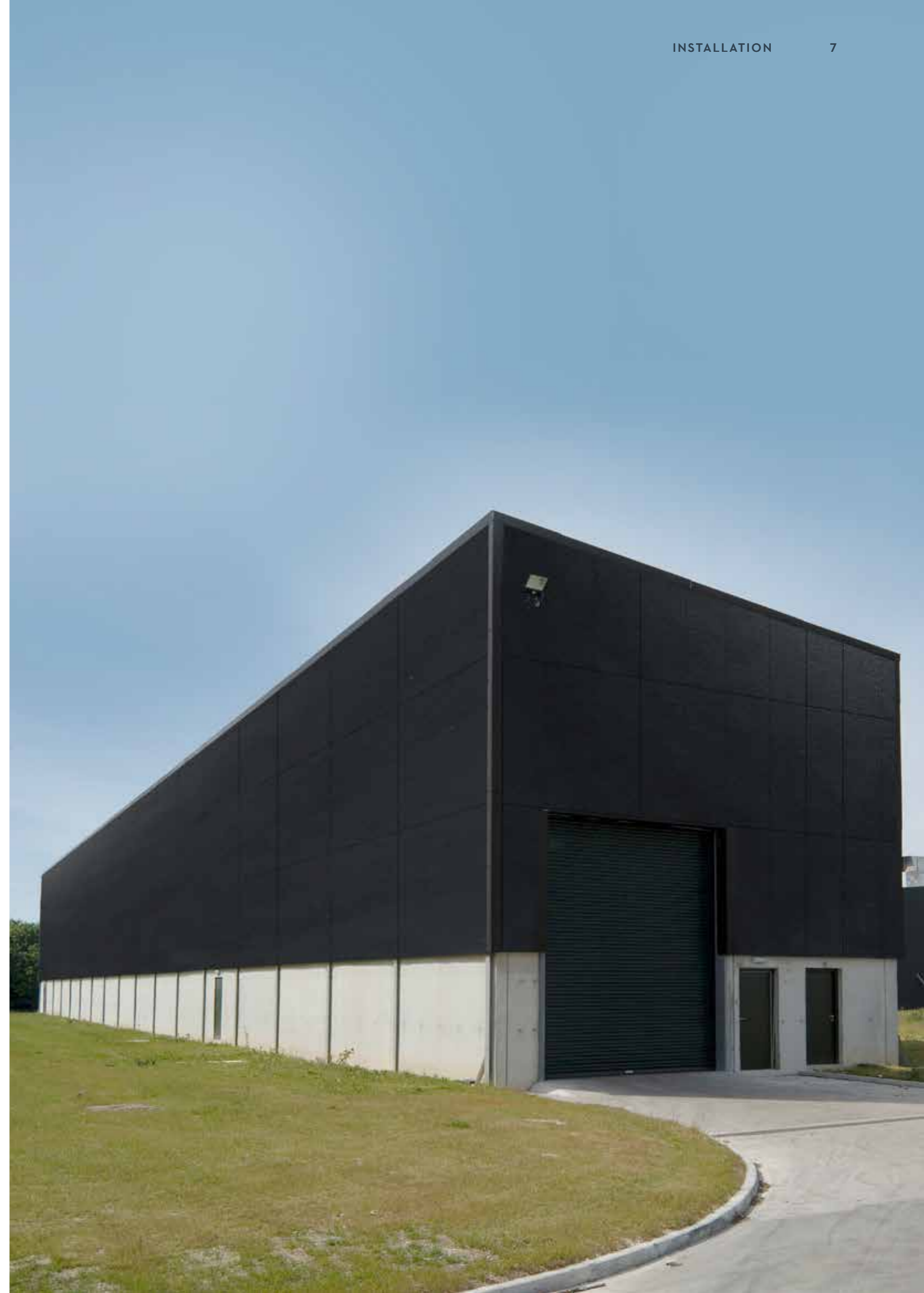
Cembrit Deco



Grain direction

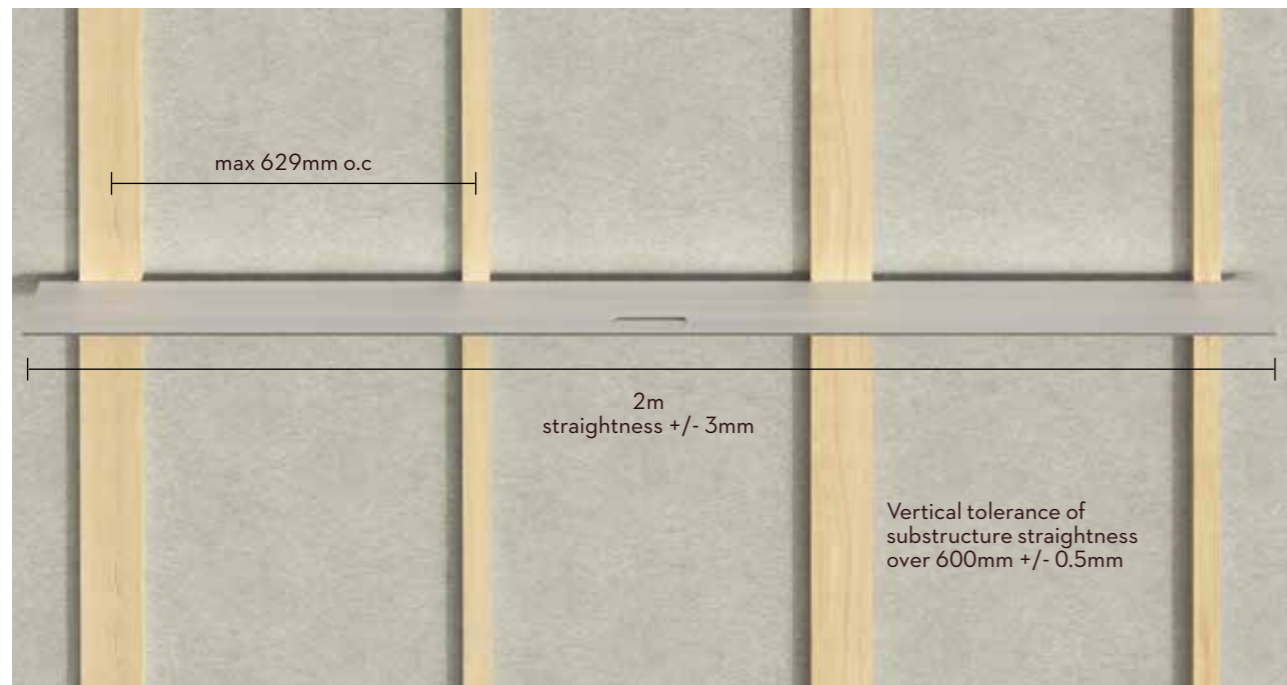
The directional grain of the board is subtly visible through the paint like the veneer of your living room furniture - adding a smooth yet natural look to the painted Cembrit Deco board.

Quick facts	Type	Fire class	Thickness	Dimensions	Weight/m ²
Cembrit Deco	Through coloured	A2,s1-d0	8mm	1192x2500mm 1192x3050mm	12.8kg/m ²



Installation

Substructure



Straightness of substructure

Fastening substructure

Anchorage of the substructure on the load-bearing wall must follow all local standards and regulations.

Before installing the substructure on the load-bearing wall, it should be checked by the installer to ensure that it is straight and the substructure can be mounted safely.

Make sure to choose the correct anchorage system for the substructure suitable for the material. Always install the anchoring according to the manufacturer of the system/screw/bolt used.

Use the correct corrosion resistance according to the environment of the building's location.

Wind load calculations on how the substructure should be fixed to the load-bearing wall should be considered. This calculation will normally be done by a project/construction engineer.

Wood quality for substructure

Make sure that the quality of the wood used for the substructure follows country specific standards and regulations.

Treated or untreated wood can be used for the substructure.

The thickness is min 20mm

Width at joints min 100mm

Width at middle batten 45mm

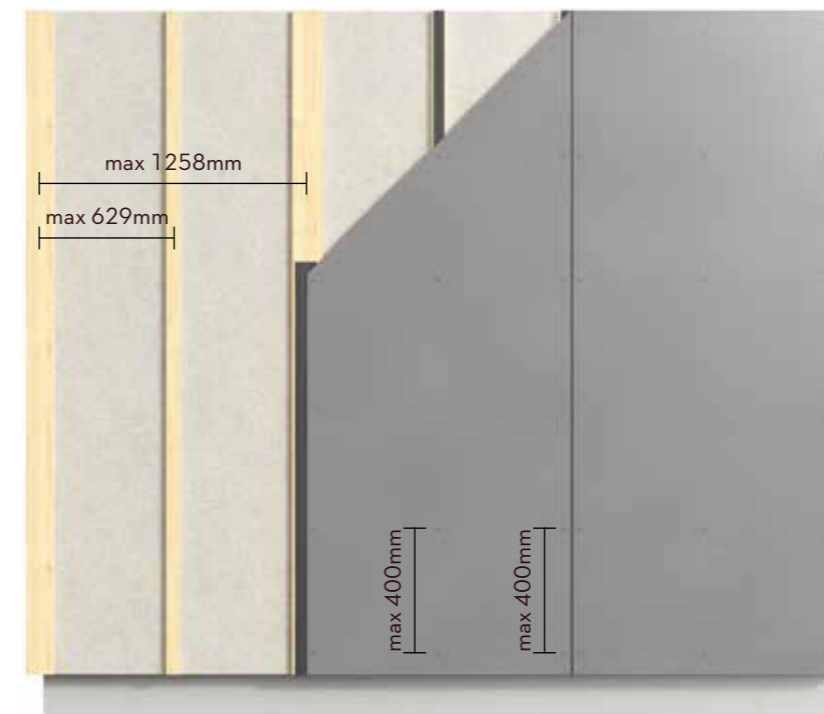
Straightness of substructure

The horizontal tolerance of straightness for the substructure is +/- 3.0mm measured with 2 meter straight edge.

The vertical tolerance of straightness for the substructure is +/- 0.5mm over 600mm measured with straight edge.

Installation

Substructure



Installing 8mm Cembrit facade boards on timber frame

Max support distances:

629mm o.c

Max screw centres: 400mm o.c

Max wind load: Please refer to the wind load table for the correct distances for substructure and screws.

The following screws can be used for this solution: Cembrit Facade Wing Screw wood with washer, SCR-WW 4.9x38mm

Cembrit Facade Screw wood with washer, SCR-W 4.5x30/36/41mm

Battens should be a minimum of 20mm thickness to provide adequate ventilation.

Batten width should be minimum 100mm for supporting battens, and 45mm for central battens.

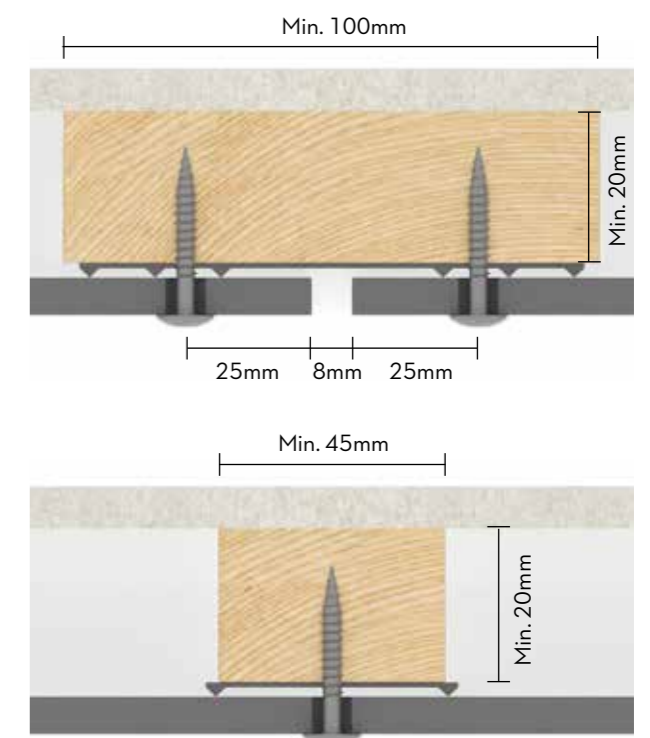
Joint gaps between boards should be a minimum of 8mm and a maximum of 16mm.

When using timber battens, always use Cembrit EPDM with profiled ribs.

Cembrit recommends using an EPDM of the same width as the selected batten.

Cembrit facade boards can also be installed on horizontal battens.

When using horizontal substructures, there must be a minimum 20mm ventilated area behind the horizontal supporting battens.



*wind load calculation assumes a Cembrit Facade Screw wood with washer, SCR-W 4.5x36 or Cembrit Facade Wing Screw wood with washer, SCR-WW 4.9x38mm

Installation

Edge distances

Edge distances

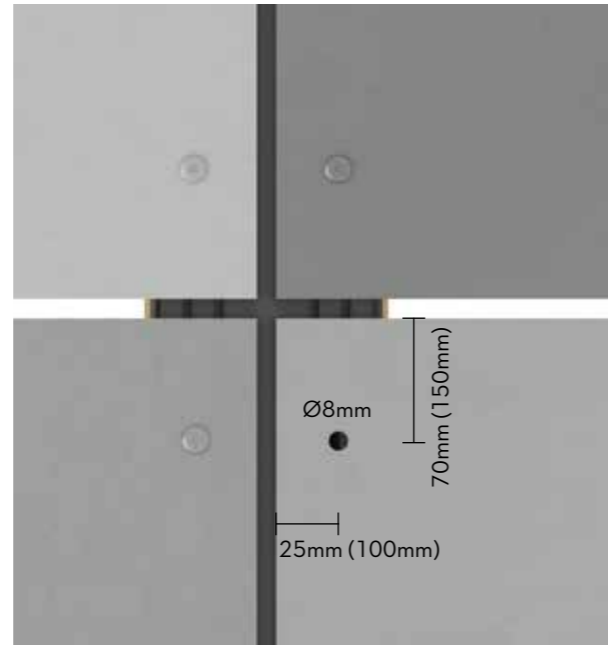
Fibre cement is an organic material that expands and contracts according to humidity conditions. Consequently, it is very important that the boards are installed using the correct edge distances. If not mounted correctly, the strength of the board is compromised and it may result in cracking near corners and edges. Therefore, you should always pre-drill the Cembrit facade boards using a Ø8mm drill suitable for fibre cement.

Horizontal and vertical installation Cembrit Deco

Edge distances side: 25mm and up to Max 100mm

Edge distances end: 100mm and up to Max 150mm

Note that that the end distance (100mm) follow the direction of the substructure.



Wind load

When installing Cembrit facade boards, consideration should be given to the location of the building and which wind load the boards can be exposed to. In the table below, you find the screw distance as well as the support distances. Combining these two shows how much the board can withstand in kN/m². It may be necessary to change support spacings/rievet distances at edge zones as the wind loads here may be higher than elsewhere on the building.

Cembrit Deco - characteristic values

Maximum Screw distances mm	Maximum batten distances mm			
	300	400	600	629
300	9.99 kN/m ²	7.49 kN/m ²	3.53 kN/m ²	3.21 kN/m ²
400	7.49 kN/m ²	5.62 kN/m ²	3.53 kN/m ²	3.21 kN/m ²

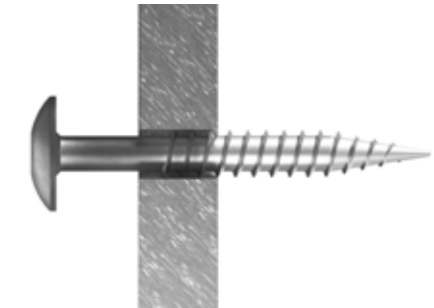
The calculations are based on ETAG 034. No additional safety factors have been added. The test on which the calculations are based is made by an accredited laboratory with Cembrit Facade Screws and the substructure used in the manual. The calculations are also based on the following material of the substructure; Wood C24 of minimum 20mm thickness including a 6-8mm board and 3mm EPDM. If other types of screws are used, Cembrit cannot vouch for the numbers in the chart. For high buildings or buildings located in exposed areas, there may be a need for specific wind load calculations and simulations, in which case you can contact Cembrit for further information. There may also be situations where additional support and screws are needed in edge zones of the building. The wind load calculation should always be done according to local rules, regulations and the substructure has to be installed correctly as well, so it can withstand the wind load.

Installation

Fixing points for Cembrit Deco

To make the installation on wood easier, Cembrit facade boards can be installed using two fixing positions and all other positions should be sliding points. These positions should be as close to the board centre as possible and must be aligned horizontally.

When installing Cembrit facade boards using screws, you must start with the fixing positions, followed by the sliding points above the fixing positions and finally the sliding points below (see illustration below)



X : Fixing position hole diameter Ø5 mm.
When using Cembrit Facade Screw for Cembrit Deco you need to take off the washer before installation.

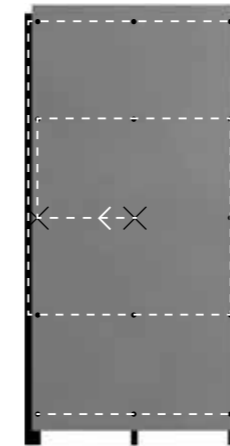
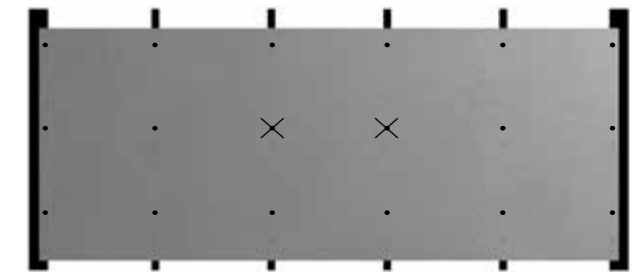
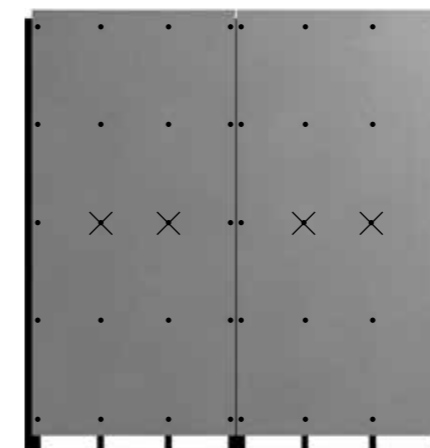


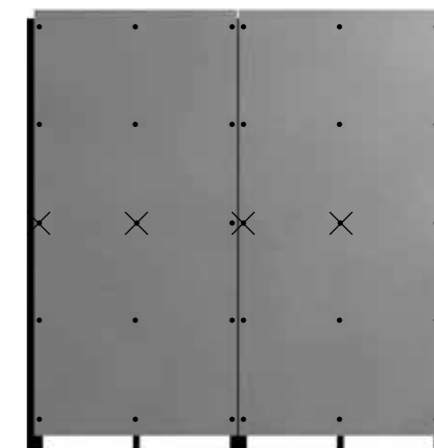
Illustration of correct screw installation. The fix points are marked with x.



Example: Horizontally mounted boards with four intermediate wood batten



Example: Vertically mounted boards with two intermediate wood batten



Example: Vertically mounted boards with one intermediate wood batten

Installation

Ceiling and soffit

Cembrit Deco is ideal for use in ceilings and soffits. The solution can be used for both exterior and interior applications. The boards can be installed on a batten directly to a concrete deck or wooden structure, or they can be used as part of a solution with a suspended ceiling system. One of the key advantages of using Cembrit Deco boards is that you can easily take down boards so you can reach any hidden installations as the boards are mounted using screws only.

Installing 8mm Cembrit Deco boards on timber frame - as ceiling or soffit
 Max support distances: 400mm o.c
 Max screw centres: 400mm

The edge distances when using Cembrit Deco boards as ceiling or soffit are in principle the same as for facade boards in which the direction of the sub-structure and the orientation of the board define the edge distances. This also applies to hole sizes, joints and distances to other building materials. Always use Cembrit EPDM with ribs on timber battens.



Screw and batten distances

Fascia solution

Installing 8mm Cembrit Deco boards on timber frame - as fascia boards
 Max support distances: 629mm o.c
 Max screw centres: 400mm

When mounting Cembrit Deco boards as fascia boards, boards below 300mm width can be mounted directly using a 3mm EPDM without ventilation battens behind the boards. When installing fascia boards of 300mm width and more, it is necessary to keep a ventilation area behind the boards as with regular Cembrit facade boards. For both solutions, make sure to keep a 10mm ventilation gap in both the top and the bottom of the fascia solution. Always use Cembrit EPDM with ribs on timber battens.

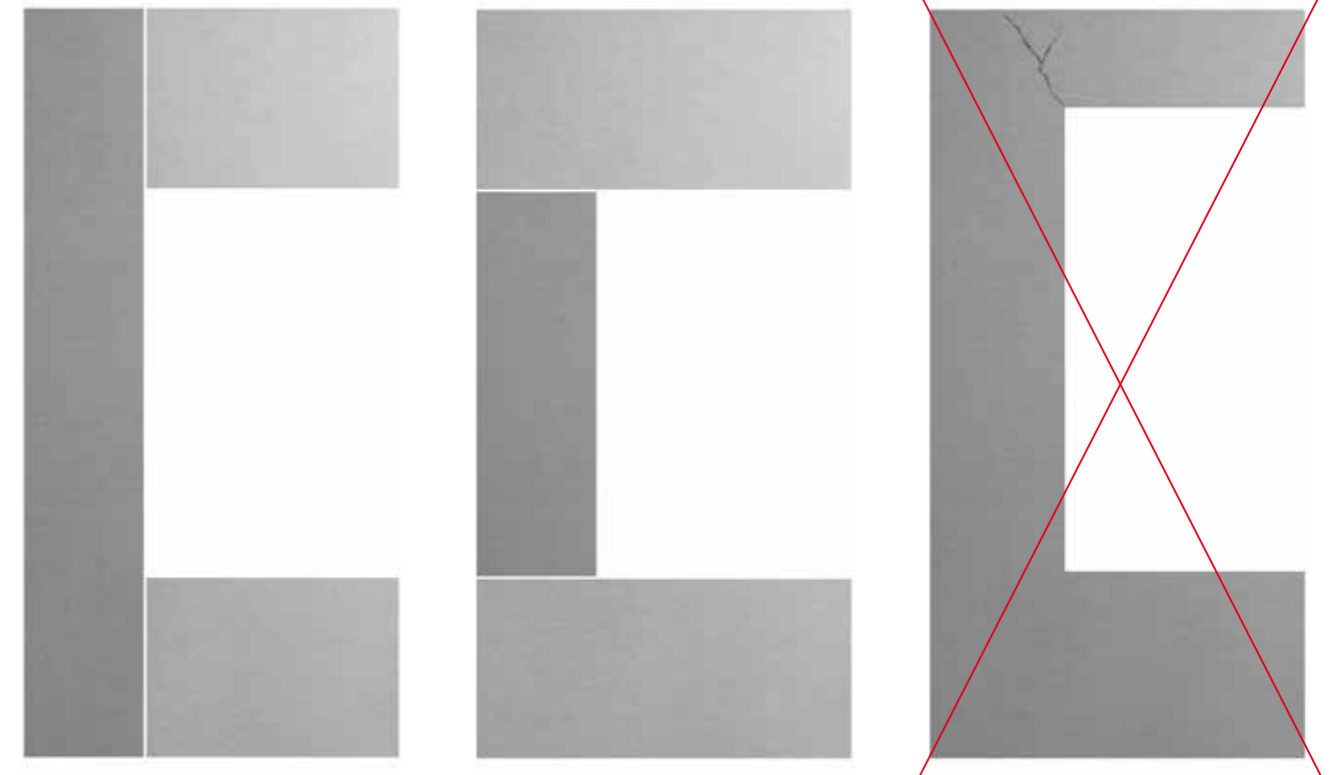
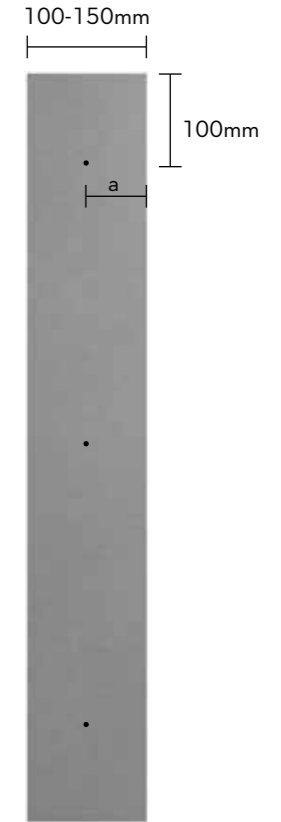


Installation

Cut outs

To avoid cracking of the boards, when installing Cembrit Deco boards around windows, doors and other openings, ensure that the facade boards are installed correctly using Cembrit's instructions. Cembrit recommends to avoid cutting single, exact apertures in boards, but instead you should cut smaller sections and install them individually. Cut the boards and make vertical joints of 8mm. Make sure that there is support behind the joints, onto which the facade board can be mounted.

If the small cut outs are not wider than 100-150mm, they can be mounted with only one rivet/screw in the middle of the board (a). This also applies when using the Cembrit Deco boards in other solutions on a building as window jambs or in connection with other narrow spaces.

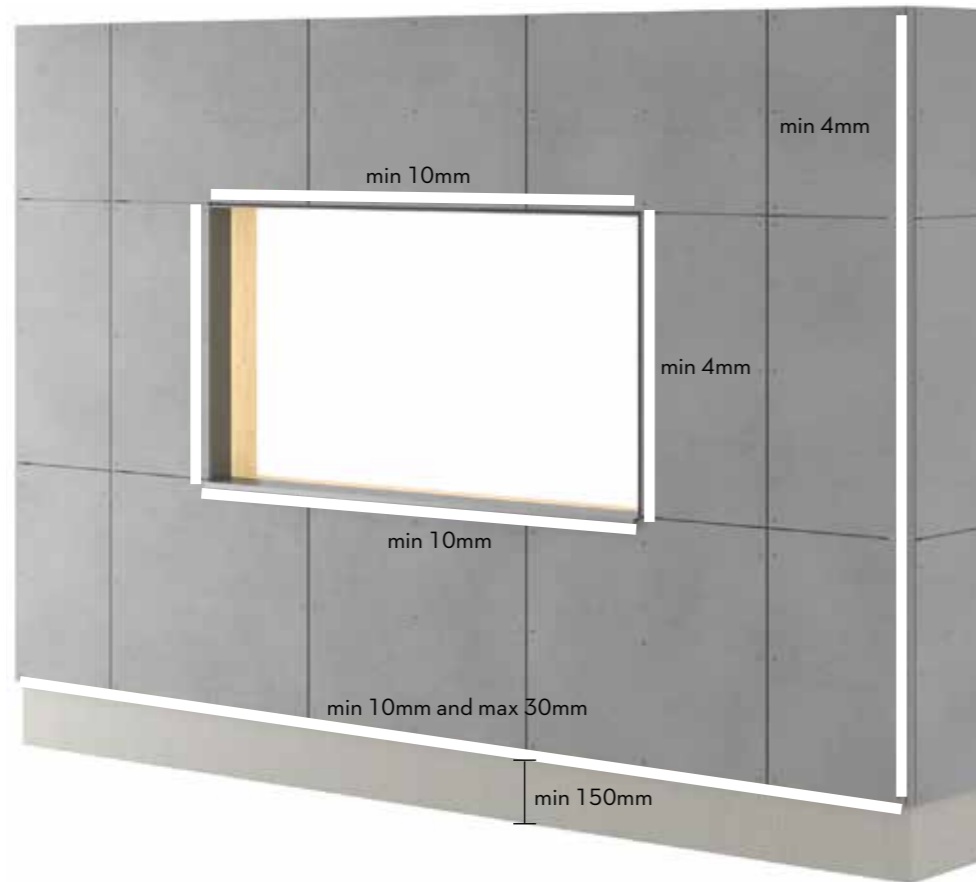


Correct installation of Cembrit facade boards at windows, doors and openings.

Incorrect installation of Cembrit facade boards at windows, doors and openings.

Installation

General distances



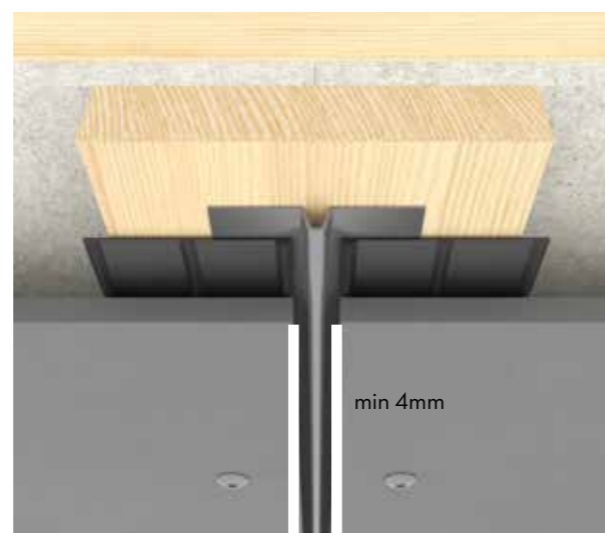
Make sure to follow the guidance regarding distances described in this manual.

The facade board should finish between 10 and 30mm below the bottom end of the sub structure. For overhang and similar, the maximum distance is 100mm.

The distance to terrain from the bottom edge of the facade board should be a minimum of 150mm. The distance to flat roofs, balconies and other horizontal structures where the water can drain away can be a minimum of 50mm.

Vertical clearance to profiles such as Cembrit alu trim or Cembrit Corner profile is minimum 4mm. For horizontal clearances at windows and doors etc. leave a minimum of 10mm for ventilation.

The clearance to other building materials is minimum 8mm for movement and water drainage.



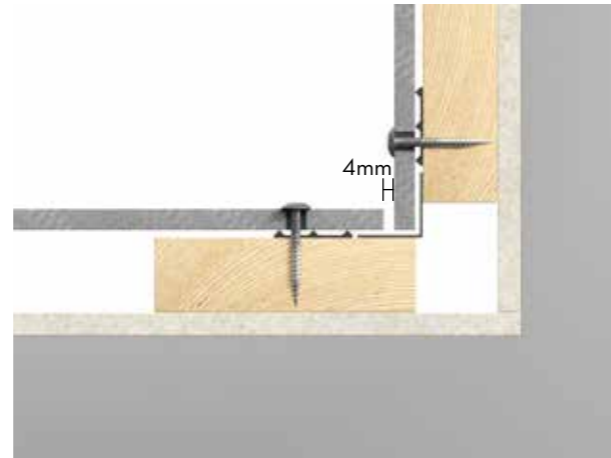
Installation

Details



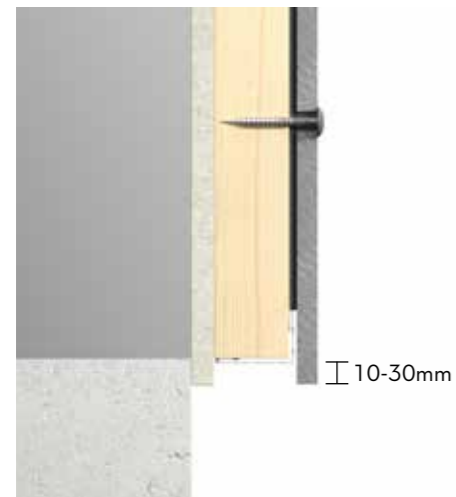
External corner solution with open joint

Make an external corner solution without a Cembrit corner profile. There should be a vertical joint between the facade boards in the corner of minimum 4mm. Cembrit recommends using a 90 or 100mm EPDM and bend it around the corner to protect the wood.



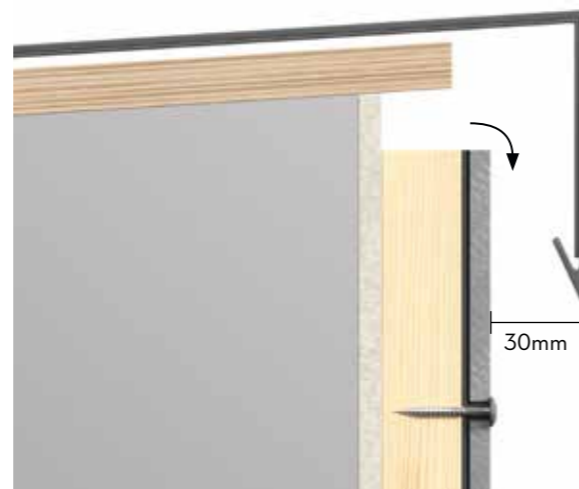
Internal corner solution with open joint

When making an internal corner, there should be a vertical joint between the facade boards of minimum 4mm. You can choose to either use 2x50mm EPDM or a 90 or 100mm EPDM and bend it around the corner to protect the wood.



Plinth construction/ bottom construction

Ensure that the facade board exceeds the substructure by 10-30mm, allowing the water from the facade to drip of. Use a ventilation grill to ensure that bugs/vermin do not enter the construction behind the facade board.

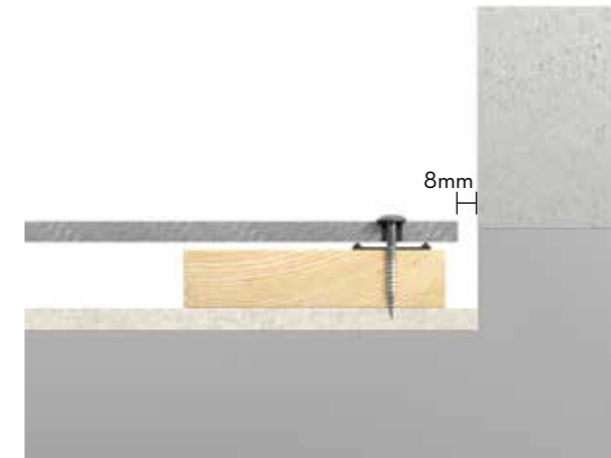


Top construction

Make sure that the ventilation can move freely to the top of the construction. As for the rest of the ventilation gaps, there should be a minimum free opening area of 10mm, or equivalent 100cm² per meter. There should be a minimum of 30mm from the facade board front to the drip edge of the capping.

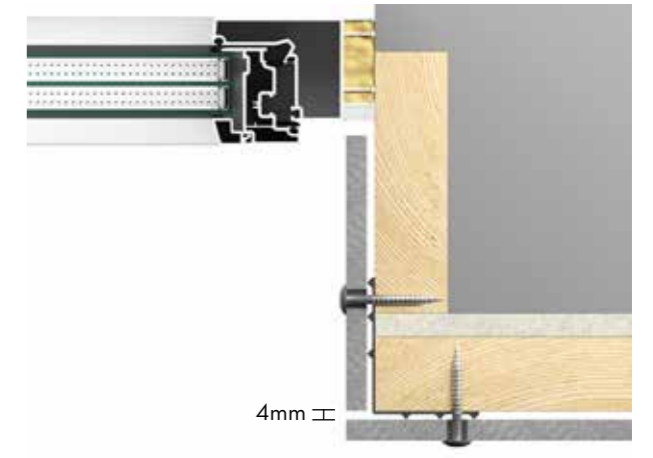
Installation

Details



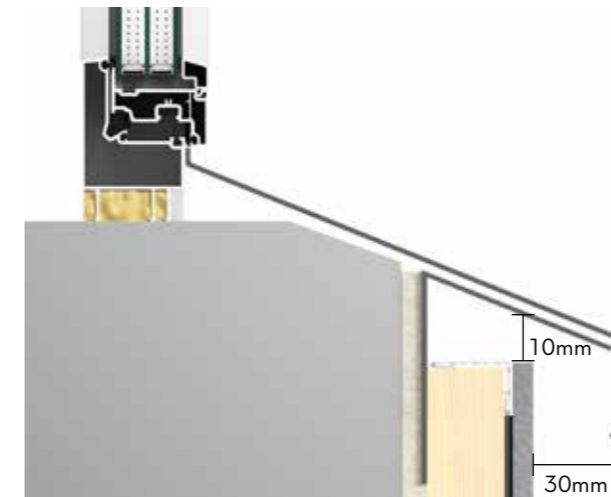
Endings / Finishing

Behind the facade board, a ventilated batten of min 45mm width should be installed and there must be a minimum of 8mm clearance to other building materials to allow for structural movements and proper water drainage and ventilation.



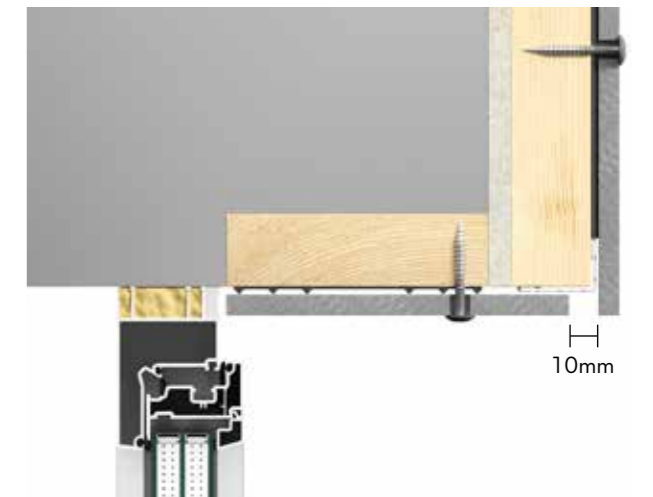
Window jamb

Cembrit facade boards can be used for window jambs and returns. Cut the facade boards to fit the depth of the window jambs. When mounting with one screw, the width of board should not exceed 200mm. If the depth is more than 200mm, additional screws or a window U profile, into which the facade board can be inserted, must be used. There should be a vertical joint of minimum 4mm between the facade boards.



Window Sill

Cembrit facade boards should not be used as sills. We recommend the use of formed aluminium or steel profiles. It is recommended that the sill projects a minimum of 30mm beyond the face of the facade. There should be a minimum free open area of 10mm, or equivalent 100cm² per meter between the top facade board and the sill to ensure adequate ventilation behind the facade.



Window head

As with jambs, the window head can be formed using a Cembrit board. At the front edge of the head detail, ensure a minimum free opening area of 10mm, or equivalent 100cm² per meter to ensure adequate ventilation behind the facade. Use a Cembrit Ventilated Profile to ensure that insects/vermin cannot enter the construction behind the board. Please follow same details as for window jambs.

Profiles

Cembrit offers a wide range of profiles to create weathertight and aesthetically pleasing facades. Cembril Profiles are available in a variety of standard or special colours - either pre-painted or powder coated.

The profiles are fixed using clout nails, and should be pre-drilled with an Ø4mm metal drill bit to ensure that the profiles can be secured effectively.

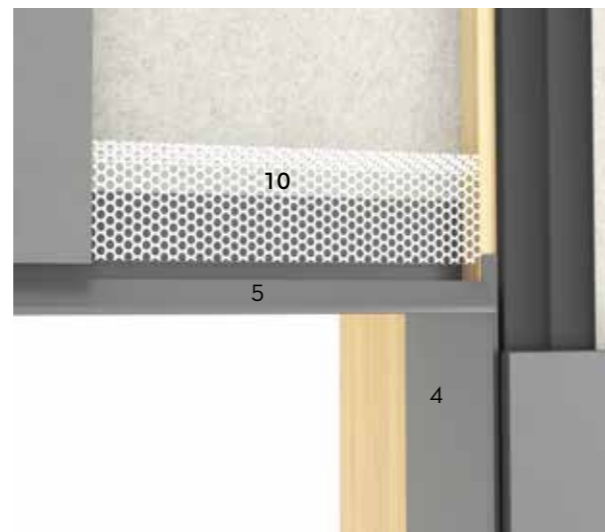


Profile solution for doors and windows

When using Cembril's profiles for doors and windows, it is easy and quick for the installer to achieve a finish that matches the boards. As the same installer can fit boards and profiles, this system offers time and cost savings.

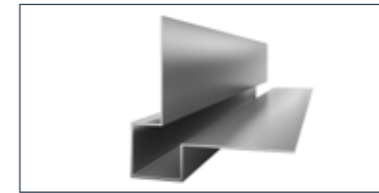
Typical door/window head solution

- 4. Cembril Vertical Trim Profile small
- 5. Cembril Horizontal Trim Profile small
- 10. Cembril Ventilated Profile



Profiles

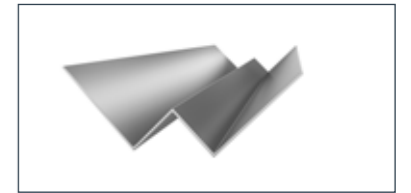
Most Cembril profiles are fabricated from 1mm thick formed aluminium. For standard boards, the profiles are pre-coated formed aluminium which has a gloss 30. For non-standard colours, the profiles are unpainted formed and powder coated aluminium with a paint of gloss 70. The profiles in standard colours are protected with a sticky foil.



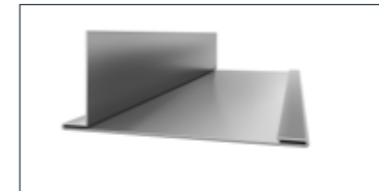
1. Cembril External Corner Small
Length 3000mm



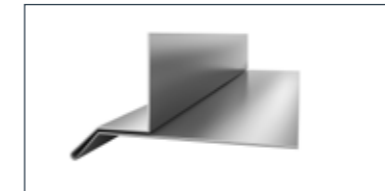
2. Cembril External Corner Peak
Length 3000mm



3. Cembril Internal Corner
Length 3000mm



4. Cembril Vertical Trim Profile small
Length 3000mm



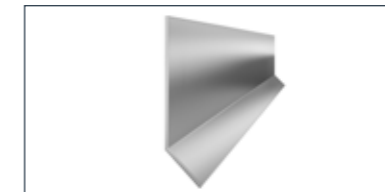
5. Cembril Horizontal Trim Profile small
Length 3000mm



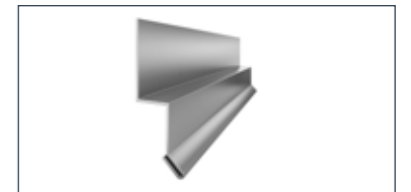
6. Cembril Window Sill
Length 3000mm



7. Cembril Caulking Profile
Length 3000mm



8. Cembril Horizontal L Profile
Length 3000mm



9. Cembril Drip Small
Length 3000mm



10. Cembril Ventilated Profile
0.6 mm Perforated steel
Length 3000mm

Profiles

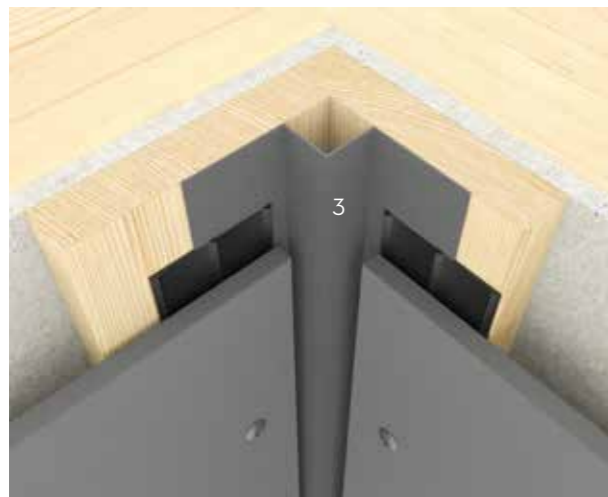
Profile Use



Cembrit External Corner Small is used for 90° external corner constructions, to a secure finishing detail. The profile is fixed using clout nails at 400-500mm centres through pre-drilled Ø4mm holes. Facade boards will help to hold the profile in place. There should be a minimum 4mm gap between the board edge and the profile.



Cembrit External Corner Peak can also be used for 90° external corner constructions. It is installed in the same way as Cembrit External Corner Small, using clout nails. The distance from the inside edge of the facade boards to the profile should be a minimum 2mm.



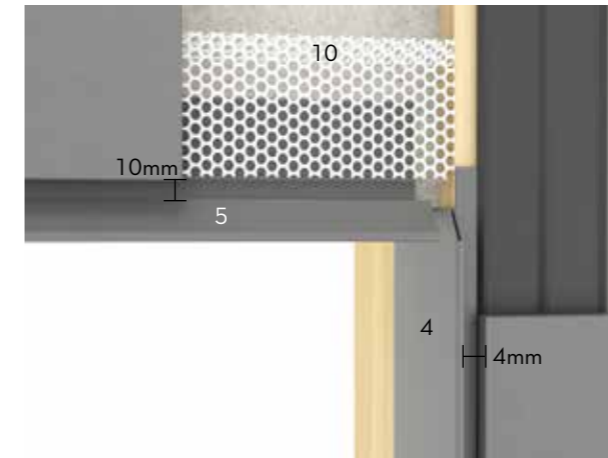
Cembrit Internal Corner is used for 90° internal corners. The profile is fixed using clout nails at 400-500mm centres through pre-drilled Ø4mm holes. There should be a minimum 4mm gap between the board edge and the profile.



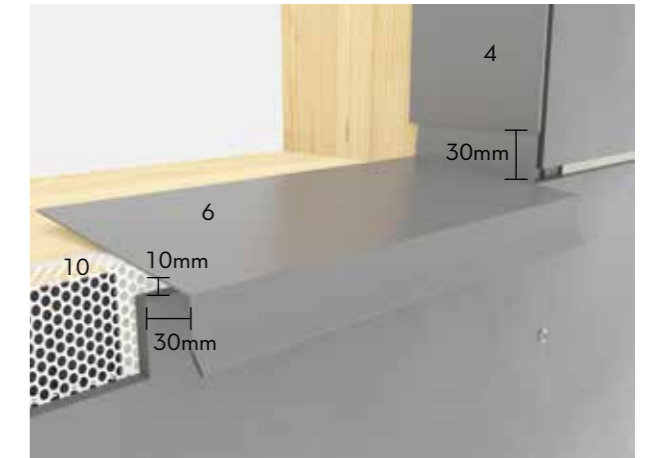
Cembrit Drip Small is used to drain water away from the supporting structure or where neat detailing is required at the foot of the facade. The profile can be used in conjunction with Cembrit Ventilated Profile to ensure that insects and vermin or similar cannot enter the cavity behind the facade boards. There should be a minimum 4mm gap between the board edge and the profile.

Profiles

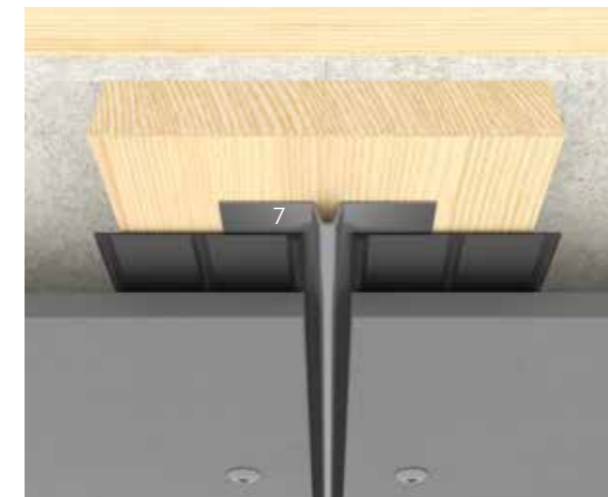
Profile Use



To create appealing and neat window and door details use Cembrit Vertical Trim profile on each side of the opening, and a Cembrit Trim Horizontal profile as well as a Cembrit Ventilated Profile. To achieve the best finish, trim the top edge of the vertical profile to match the angle of the outer face of the horizontal profile. To provide sufficient ventilation, there should be a minimum of 10mm gap between the horizontal profile and the edge of the facade boards.



At the window sills, use Cembrit Window Sill. To ensure that water is properly drained from the structure, create a 30mm upturned tab at each end of the profile and cut to neatly fit flush behind the vertical trim profiles. The Cembrit Vertical Trim Profile is then fitted over the upturned sill tab. Underneath the window, a Cembrit Ventilated Profile is installed to help stabilize the sill. There should be a 10mm gap between the sill and the facade board to provide correct ventilation. It is also recommended that the front edge of the sill projects 30mm beyond the facade board.



Cembrit Caulking Profile can be used with both vertical and horizontal joint profiles. It is not mandatory to use Cembrit Caulking Profile, but it provides excellent joint solutions. The profile is installed in the same way as Cembrit External Corner. There should be a minimum 4mm gap between the board edge and the Cembrit Caulking Profile.

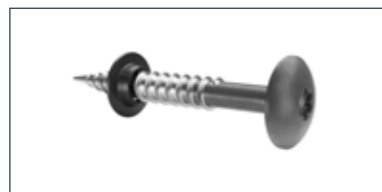


The Horizontal L Profile used for horizontal joints should be cut in the same length as the width of the facade board.

Accessories

All Cembrit Facade Screws have mushroom heads with a torx 20 drive. Cembrit Facade Screws are supplied as unpainted or in colours corresponding to the facade boards. It comes in two steel qualities, A2 and A4. A2 is the standard quality available in several lengths, whereas A4 steel quality is only available in one length.

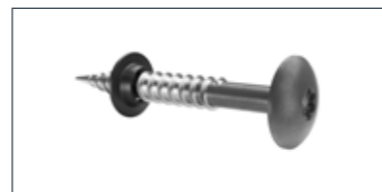
Cembrit Facade Screw



Cembrit Facade Screw wood
With washer
SCR-W 4.5x30 /36 /41mm
A2 stainless steel
(Cembrit Cover, Cembrit Solid and Cembrit Transparent)



Cembrit Facade Wing Screw wood
With washer
SCR-WW 4.9x38mm
A2 stainless steel
(Cembrit Cover, Cembrit Solid and Cembrit Transparent)



Cembrit Facade Screw for coastal areas and heavy industry (A4 Stainless steel)

Cembrit Facade Screw wood
With washer
SCR-W 4.5x40mm
A4 stainless steel
(Cembrit Cover, Cembrit Solid and Cembrit Transparent)

Cembrit EPDM 90/100mm For supporting battens



Cembrit EPDM 3x100mm
30m/roll Black

Cembrit EPDM 30/50mm For centre battens



Cembrit EPDM 3x50mm
30m/roll Black

Cembrit Edge paint kit



Cembrit Edge paint kit
0.9L

Cembrit Blades

For cutting Cembrit facade boards, the following blades can be used.

Diameter	Ø160	Ø190	Ø216	Ø250
Thickness mm	2.2/1.6	2.2/1.6	2.2/1.6	2.2/1.8
Centre hole mm	20	30	30	30
RPM	4800	4000	3500	3000
Teeth	6	4	6	14



Drill

For pre-drilling of Cembrit facade boards, please refer to your local Cembrit office for instructions.

Diameter	8mm
----------	-----

Accessories

Consumption of material

To be able to calculate the consumption of materials when installing Cembrit facade boards, use the table below for reference. The consumption shown is per board.

Accessories per full sizes facade board				
Width	mm	1192		
Length	mm	2500	3050	
Thickness	mm	8	8	
Coverage per board	m ²	2.98	3.64	
Max distance - battens (o.c)	mm	600	600	
Wall (Vertical mounted facade boards)	Facade screw oc. 400mm	pcs.	21	27
	EPDM 30/50mm	m	2.50	3.05
	Numbers of central battens	pcs.	1	1
	EPDM 90/100mm	m	2.50	3.05
Wall (Horizontal mounted facade boards)	Numbers of supporting battens	pcs.	1	1
	Facade screw oc. 400mm	pcs.	24	24
	EPDM 30/50mm	m	3.60	4.80
	Numbers of central battens	pcs.	3	4
Soffit/Celling	EPDM 90/100mm	m	1.20	1.20
	Numbers of supporting battens	pcs.	1	1
	Substructure distances	mm	400	400
Soffit/Celling	Facade screw oc. 400mm	pcs.	28	36
	EPDM 30/50mm	m	5.0	6.1
	EPDM 90/100mm	m	2.50	3.05

Accessories

Cembrit Facade Screws

Cembrit Facade Screw

For Cembrit Patina design line boards, you should use the Cembrit Facade Screw SCR-W without washer with a Ø12mm mushroom head. For Cembrit Cover, Cembrit Solid and Cembrit Transparent, you should always use the Cembrit Facade Screw with washer. This washer prevents moisture from entering the board as well as centering the screw in the hole.

For timber batten substructure, Cembrit offers the SCR-W screw in three different screw lengths; 30mm and 36mm for one layer of boards and 41mm for two layers of boards.

Pre-drilling

For pre-drilling, it is recommended that you use a drill bit Ø8mm that is suitable for fibre cement. This leaves you with the best results and the optimum number of drilled holes per drill bit.

Dust from cutting or drilling must be removed with a brush or compressed air immediately after the work has been completed, otherwise it can mark the surface of the boards.

Applying Cembrit Facade Screws

Ensure that Cembrit Facade Screws are centrally located in pre-drilled holes. The screw must be angled 90 degrees to the facade board.

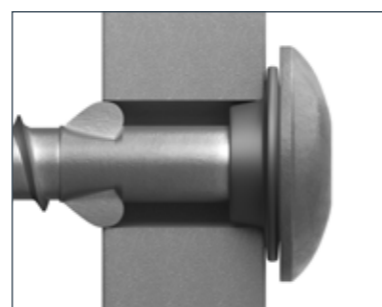
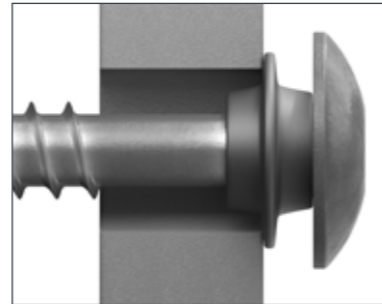
When inserting the Cembrit Facade Screw, please be careful not to overtighten the screw - especially near the edges and corners of the boards. When installing Cembrit Facade Screw with washer, make sure the washer is placed in the bottom of the screw. This way the washer helps to center the screw in the middle of the hole.

Cembrit Wing Screw

If using Cembrit Wing Screw SCR-WW (4.9x38mm), no pre-drilling is necessary. These screws are 'self-tapping' with cutting edges that create the correct hole diameter at the marked positions on the boards. For the Cembrit Wing Screw SCR-WW the washer will be placed in the top part of the screw, since the screw is already centred then the washer will be installed correctly in the hole.

Screw quality

Cembrit offers Facade Screws in A2 and A4 stainless steel. A2 is the standard offering for suburban or rural environments, but for more demanding environments like heavy industrial and coastal use, Cembrit recommends using A4. Please note that the A4 screw is only available in one length for steel and timber. Cleaning of screws should be done in order to avoid surface contamination.



Accessories

Cembrit Blade

To ensure a neat finish when cutting Cembrit Patina design line boards, it is important to use the correct blade. Cembrit recommends using Cembrit Blades as they have been customised for the purpose and leave you with the best end-result.

The blades have trapezoidal diamond teeth which provide excellent cutting quality and extremely long durability. In addition, the amount of dust generated is significantly reduced compared to similar blades. The Cembrit Blade is available in 4 sizes depending on which saw is used.

The Cembrit blade can be used with dive saw, circular saw and stationary circular saw.

The Cembrit Blade is a high quality product that can be sharpened thus improving asset cost efficiency. To achieve the best quality cut and to know which side to cut from, make sure to follow the instructions shown here. The direction varies depending on which saw you use.

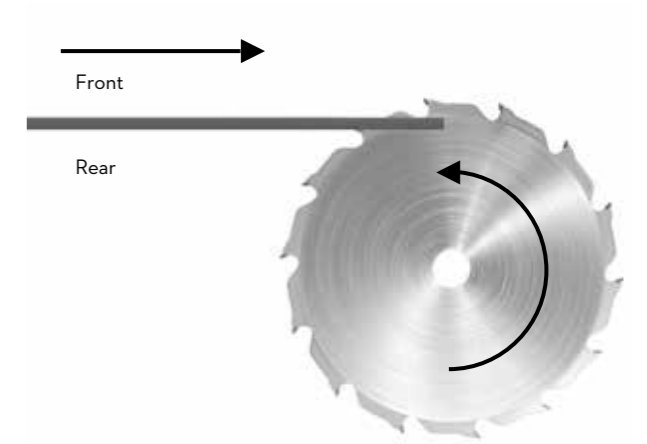
Handling

When cutting the facade boards, do not force the sawblade through the board. If you force the saw, the blade might overheat causing small vibrations - affecting the straightness of the cut or causing the board to flake if near the edges.

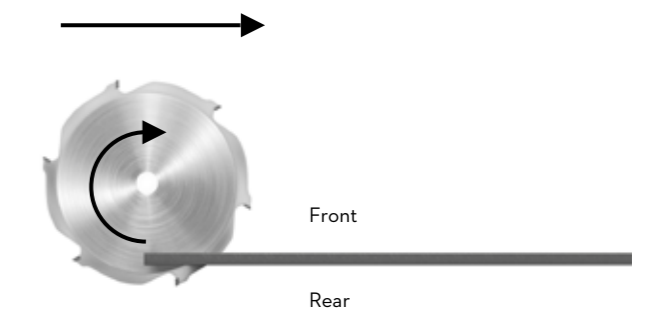
It is important to remove dust caused by cutting and drilling immediately either with a soft brush or a vacuum cleaner as it otherwise might damage the boards. Ensure that the boards are properly cleaned before installation, and if necessary use clean water, or water with a mild detergent and a soft sponge, or brush to remove dirt and dust from the surface.

Local requirements regarding safety must always be followed. Make sure to use correct safety equipment such as masks and dust extraction, ensure that the saw is set up correctly according to the manufacturer's instructions.

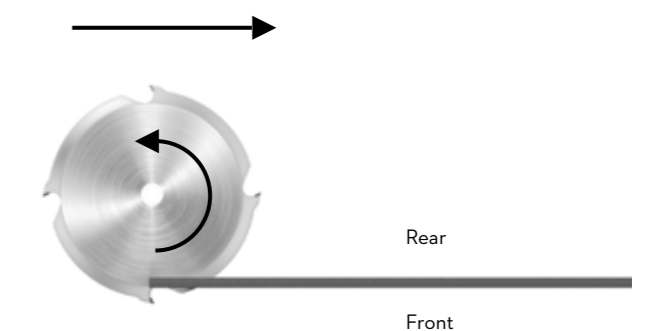
Never use water when cutting Cembrit facade boards.



When using a table saw, place the board with the face uppermost on the table and cut from the rear of the board.



When using a mitre saw, cut the board from the front.



When using a circular saw or dive saw, cut the board from the rear.

Accessories

Edge Sealer

Edge paint for Cembrit Deco

Cembrit Edge Paint must always be used to protect all cut edges of the Cembrit Deco facade boards.

Product type

Waterborne acrylic paint for Cembrit Deco facade boards. Delivered in 0,9 liter can with short hair application roller.

Preparation of the boards

After cutting, edges must be treated immediately with Cembrit Edge Paint. Board must be dry. Edges must be thoroughly cleaned from dust and dirt before applying Cembrit Edge Paint.

Application

Board and air temperature should be between +5 and +30°C (optimal +20°C).

Relative humidity of air below 80%.

Before application, stir the Edge Paint.

Apply the paint on the cut edge using the short hair roller. Check that the paint covers the entire edge surface. Carefully prevent the paint to flow onto the front side of the board.

Immediately wipe off eventual excess paint from front side.

Clean the roller with water immediately after use.

The boards are manageable within short time after applying the Cembrit Edge Paint.

Do not use Cembrit Deco Edge paint to repair scratches or damages on the front of the board.

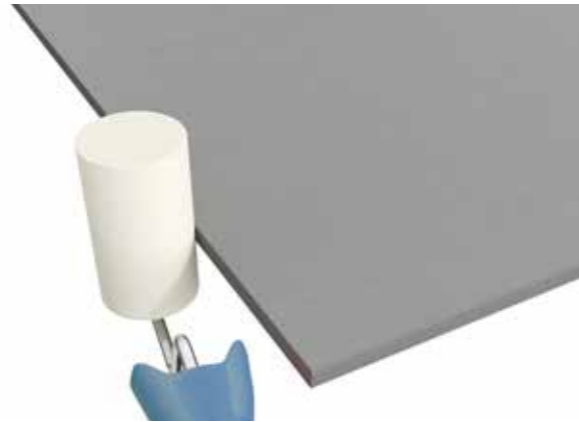
Storage

Always keep the containers tightly closed and avoid direct exposure to sunlight.

Storage stability: 6 months in un-opened original packaging at temperature of +5 to +35°C

Disposal

This material and its container must be disposed in compliance with local and national regulations. European Waste Catalogue (EWC) 08 01 12 Waste paint and varnish other than those mentioned in 08 01 11.



Cembrit Edge Paint kit
0.9L

Safety Measures

Contains 1,2-benzisothiazol-3(2H)-one and reaction mass of: 5-chloro-2-methyl-4-isothiazolin-3-one [EC no. 247-500-7] and 2-methyl-2H-isothiazol-3-one [EC no.220-239-6] (3:1). May produce an allergic reaction. Wear protective gloves.

Provide adequate ventilation. Wear appropriate personal protective clothing to prevent skin contact.

If there is a risk of exposure, wear safety eyewear.

In case of contact with eyes, rinse immediately with plenty of water and seek medical advice.

Do not eat, drink or smoke during application.

Safety data sheet available on request.

Onsite Handling

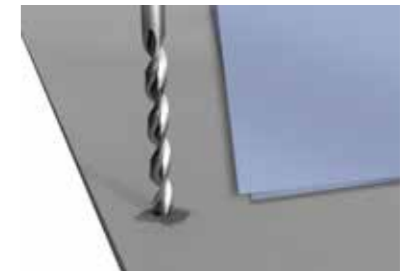
Cembrit Deco are supplied with a polyethylene foam layer between each board to prevent scratching and damage to the surface. The polyethylene is an environmentally friendly polymer that can be disposed of as normal combustible waste.



When marking the boards, make sure that marks are no larger than the hole to be drilled or no thicker than the blade that is to cut the board, as it can be difficult to remove marks from the board afterwards.



Once boards are cut, you can bevel the cut edge with a fine grinder (80 grain) to give the edge a pre-cut finish. The bevel should be angled at 45° relative to the board. This retains edge strength and removes small irregularities.



If not using Cembrit Facade Wing Screws, the boards should be pre-drilled with an appropriate fibre cement drill bit. Dust from cutting or drilling must be removed with a brush or a fiber cloth immediately after the work has been completed, otherwise it can mark the surface of the boards.



Cembrit Edge Paint must always be used to protect all cut edges of the Cembrit Deco facade boards.

Storing and Handling



Cembrit products are delivered with plastic protection cover. If undamaged, the plastic cover provides good protection against dust and weather conditions during transportation. Always store Cembrit products on a flat dry level surface.



Only two pallets must be stacked on top of each other. Make sure they are positioned so they stand securely and stable.



If the pallets are stored outside when they arrive at the building site, the plastic cover should be removed. The facade boards should be stored on the pallet or sleepers with max 500mm distances.



Replace the plastic with a tarpaulin. It is very important that there is ventilation all around the tarpaulin and also on top of the pallet under the tarpaulin. This is done to make sure that condensation is reduced as much as possible.



If Cembrit facade boards are stored more than 2-3 weeks on site, the pallets should be kept under a roof to ensure dry and ventilated conditions.



Do not drag products from the pallet, as it may leave permanent scratch marks. Lift the product by its narrow edge as it may break if handled incorrectly.

Care & Maintenance

On-site

Cleaning of boards after cutting and drilling

It is important to immediately remove dust caused by cutting and drilling from the front and rear of the boards with a soft brush/duster or a vacuum cleaner, as it otherwise might damage the boards. Ensure that the boards are properly cleaned before installation, and if necessary use clean water or water with a mild detergent and a soft sponge or brush to remove dirt and dust from the surface. Thereafter, wipe the boards with a damp cloth. It may also be necessary to wash the surface after installation if the building site conditions have been unfavourable. This is done with lots of clean water or water with a mild detergent and a soft sponge or brush and finally wiping the boards with a damp cloth.

Removal of calcium-based residues

Calcium carbonate residue may occasionally be seen on the board surface. This can be difficult to remove with water or even with detergents because it does not dissolve in water. For cleaning purposes 10% acetic acid (CH₃COOH) solution is used to dissolve the calcium compounds. Note! Carefully observe safety precautions (MSDS) when working with acetic acid. R-phrase R36/R38 is valid: "Irritating to eyes, respiratory system and skin". Use proper clothing, nitrile rubber gloves, eye protection goggles and approved respirator (filter A, E or A/E).

Carry out the mixing outdoors. Apply the diluted 10% acetic acid solution evenly with a spray can to the surface of the stained board. Leave it to react for a few minutes. Do not allow the solution to dry, but rinse with lots of clean water. Repeat the process if necessary and rinse with water afterwards.

Note! Do not execute the cleaning process with acetic acid in direct sunlight or on hot surfaces. This might create permanent stains.

Cleaning of neighbouring areas

Windows and glass in particular but also other adjacent areas must be kept clean during the façade board installation and if necessary protected with plastic film. Alkaline leaching from cement bonded materials (dust from cutting or drilling holes in structural concrete, etc.) is prone to damaging glass and other materials. Therefore, frequent cleaning during and after the construction period is needed.

Surface damages and scratches

Damages and scratches should be avoided by lifting the boards off the pallet and handling them carefully during installation. Scratches might leave white streaks on the surface which will turn dark when exposed to rain, because the board absorbs water through the scratch. Repair paint is not available. The only way to prevent dark stripes or spots is to carefully apply clear Cembrit Edge Sealer onto the scratch with a thin brush. In any case the dark area will diminish after 6 to 12 months, because of the carbonation reactions in the cement matrix of the board. Do not use Cembrit Deco Edge paint to repair scratches or damages on the front of the board.

Wet framing/wet spots around screw holes

The principles for scratches also apply to cut edges: Carefully apply Cembrit Edge Sealer according to Cembrit instructions. Cembrit screws and rivets are supplied with sealing washers negating the need to seal pre-drilled fixing holes. When properly installed, the sealing washers will prevent water penetration into drill holes.

Care & Maintenance

After installation

Annual Inspection

Normally Cembrit facade boards do not require any maintenance. Weathering may however influence the appearance of the facade. Therefore, an annual inspection of the ventilation gaps, joints and fixings is a good idea.

Detection and repair of possible damage ensures a prolonged lifespan for the facade.

Cleaning

Cembrit facade can be cleaned with cold or luke-warm water if necessary with the addition of a mild household cleaning agent not containing solvents. Always start from below with well-defined areas. Rinse with plenty of clean water until the facade is perfectly clean. Before cleaning full scale, it is recommended to test the chosen cleaning method on a smaller area to ensure it works and does not damage the board surface.

High-Pressure Cleaning

Warning! High Pressure Cleaning is a severe treatment for fibre cement facade. Exaggerated or wrong use of a high pressure cleaner may damage the surface. Therefore, High Pressure Cleaning is not recommended.

Moss & algae

Moss and algae growth can be removed with common agents available on the market. Care should be taken to ensure that the cleaning agent does not cause damage to the surface of the Cembrit facade boards. Confirm the compatibility of your cleaning agent with your cleaning agent supplier, and ensure it is applied according to the supplier's instructions. It is advised that before conducting a large-scale application a test is carried out on a small, inconspicuous area to ensure that the cleaning agent has no effect on the colour of Cembrit facade boards.

Efflorescence

Efflorescence is a naturally occurring, white, powdery deposit that can appear on cement-based building materials (including bricks, cement walls, grout, and fibre cement). It is the result of a process in which moisture draws salt crystals to the surface, evaporates, and leaves a chalky substance behind. Efflorescence occurs when all three of the following conditions exist:

1. Water-soluble salts are present in the building material.
2. There is enough moisture in the wall to turn the salts into a soluble solution.
3. There is a path for the soluble salts to get to the surface.

Efflorescence may also be a sign of water ingress behind the facade. Make certain that all openings are properly covered and there is no water intrusion due to over-driven nails.

While some efflorescence may weather away naturally on its own, it is best to take steps to treat it. Efflorescence can be removed with household white vinegar and water. For most cases of efflorescence, Step 1 - 3 works well. But for substantial deposits of efflorescence go to Step 4.

For best results, follow these cleaning instructions:

1. Protect areas that are not to be cleaned. Rinse all plants and vegetation around the facade with water before and after application of the vinegar.
2. Generously coat the entire surface area with vinegar. Allow the solution to sit on the surface for 10 minutes.
3. Rinse the treated area thoroughly with water from the top down and allow the area to air dry.
4. For extra tough efflorescence: Use a 10% acetic acid solution and apply to affected area with a cotton cloth. A light scrubbing with the cotton cloth may be required. After about 20 seconds rinse with water.

Health and Safety

As with all building materials, safety precautions must be taken into account and local laws and regulations must be observed.

Cutting and drilling

When cutting, grinding or drilling, dust from the fibre cement boards is released. This dust is characterised as mineral dust. Breathing large amounts of dust may cause irritation to respiratory functions, eyes or skin. Therefore, Cembrit always recommends wearing personal protection equipment or stated by local law (Safety goggles, safety suit and a respiratory mask - P2 marked).

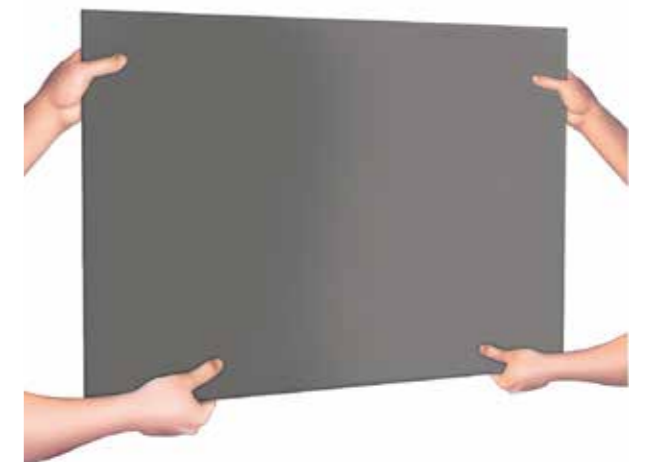
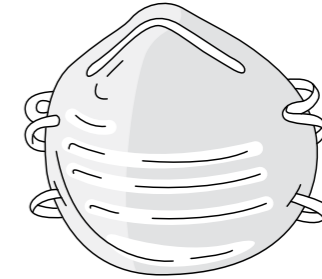
When cutting Cembrit facade boards ensure adequate ventilation.

If the boards are cut indoors, it may be necessary to use an extractor system or a HEPA filter vacuum attachment attached to the power saw. When cutting outdoors, you should also use a HEPA filter vacuum attachment to the power saw. If ventilation is not adequate to limit exposure, wear a disposable respirator or air purifying cartridge respirator fitted with a Class P2 filter (European EN 143 standard). To reduce exposure to dust, Cembrit recommends using Cembrit Circular Blade.

Lifting Cembrit facade boards

When lifting Cembrit facade boards, please consider your lifting methods both in terms of safety but also to avoid damaging the boards.

When lifting or moving the facade board, please make sure to lift the board by its narrow edge as it may otherwise break if handled incorrectly. If lifting Cembrit facade board manually, make sure to adhere to any local rules. When lifting large boards, use mechanical lifting gear if possible. If this lifting gear uses suction/vacuum, be careful not to apply too much suction, as this may damage the surface or leave permanent marks.



APRIL 2020

CENBRIT

www.cembrit.com

Please visit the local website for contact details
and further information.

Cembrit is one of the leading European manufacturers of multi-capability fibre-cement building products. Our products and solutions add exciting new design opportunities for moulding attractive, durable settings for people's lives. But Cembrit is more than mere products. We also help make all kinds of design and construction projects easier - as well as more profitable, inspiring and effective. For us, all construction also involves building relations with people, making your day better, and helping you make the day better for others. Making it a day to remember.